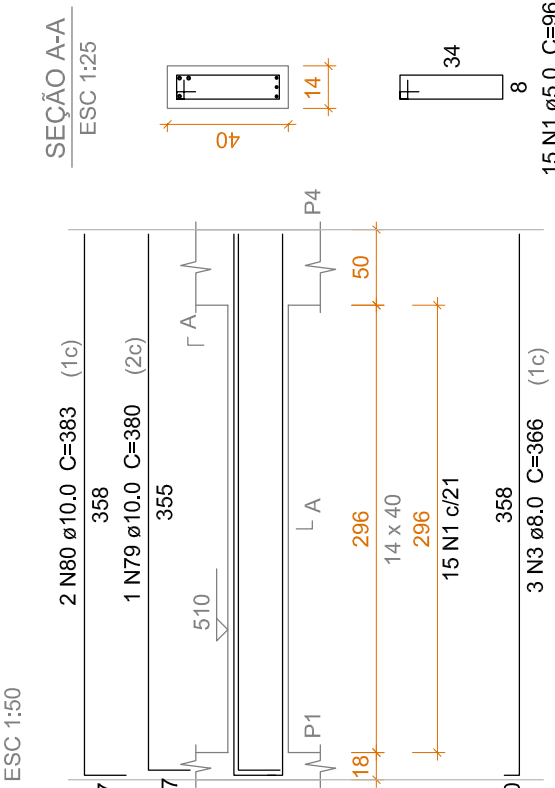
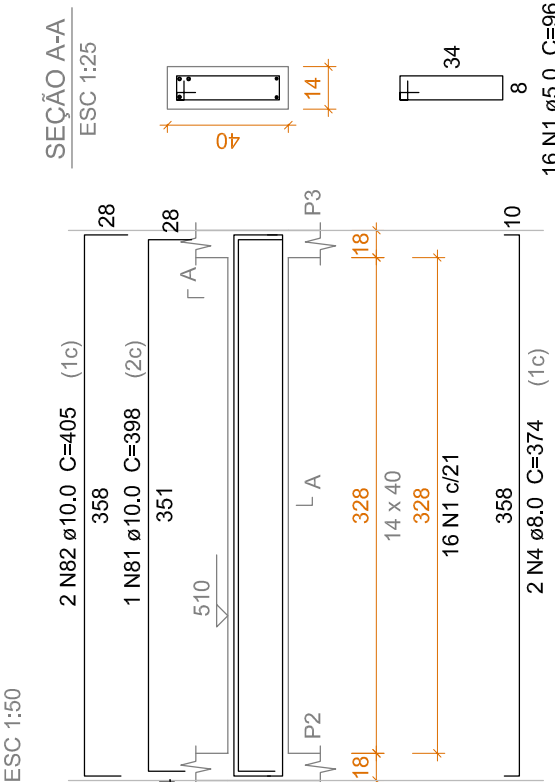


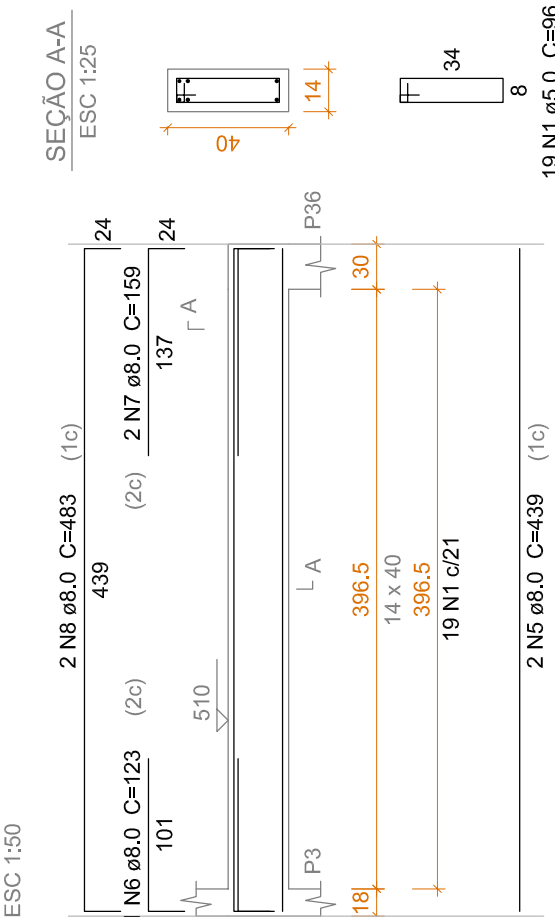
VC5 1



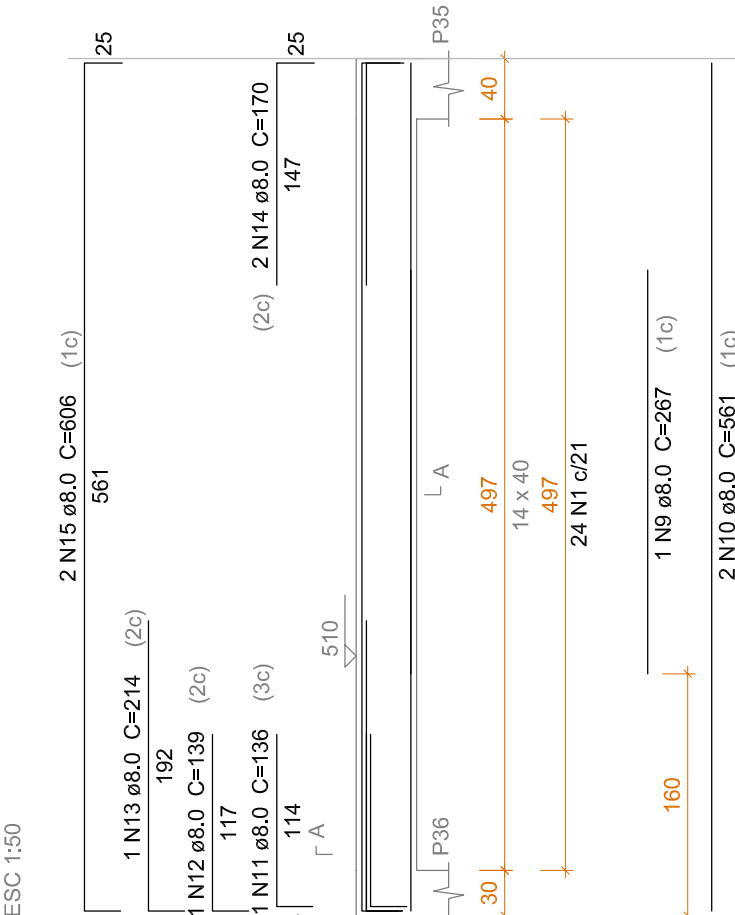
VC5 2



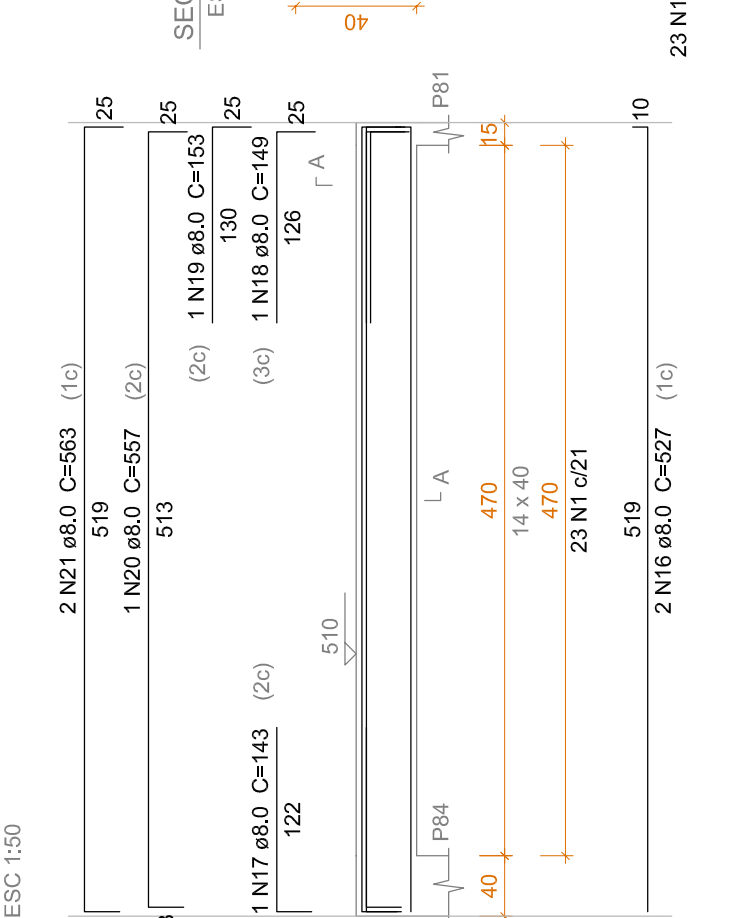
VC5 3



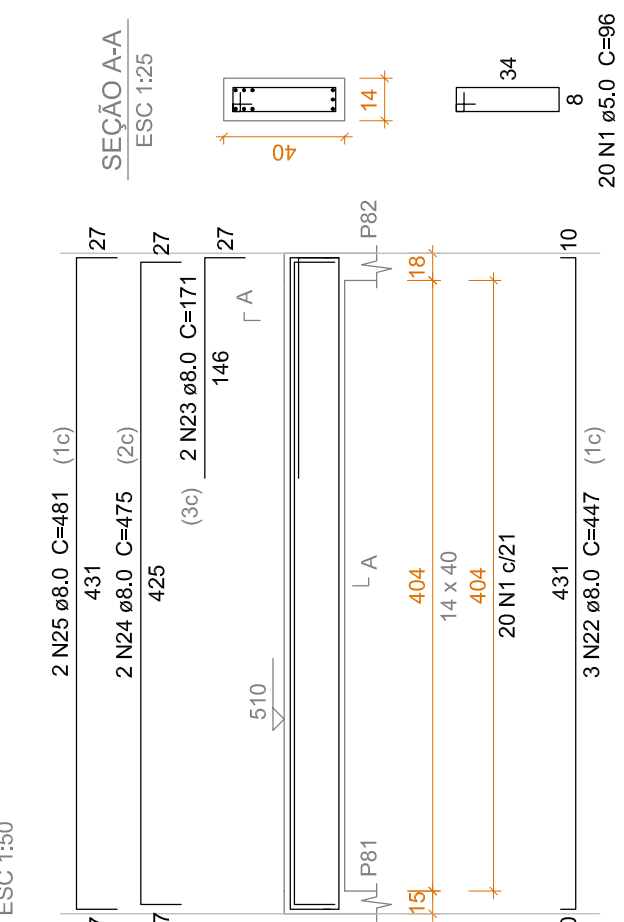
VC5 4



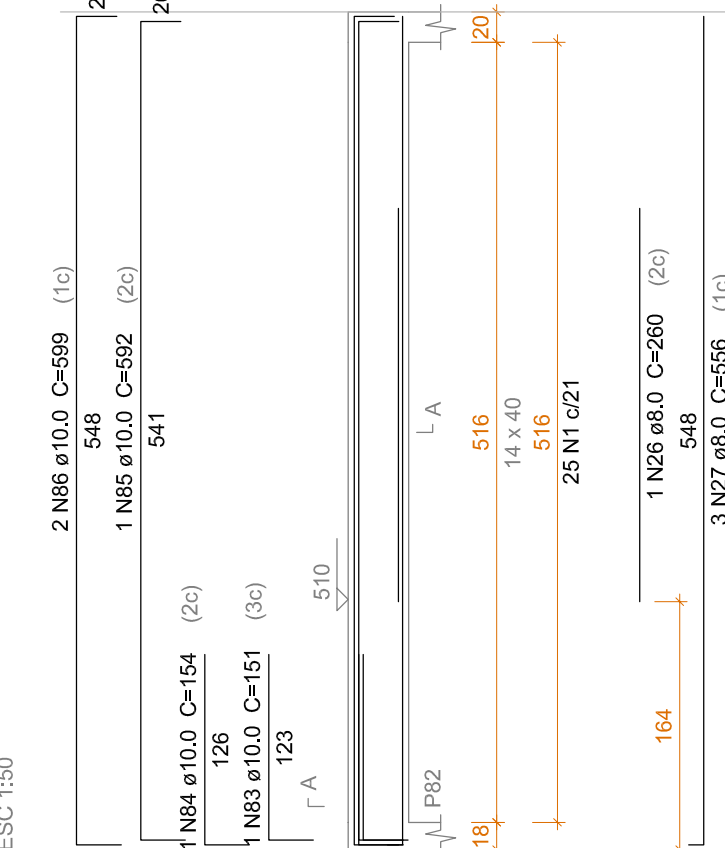
VC5 5



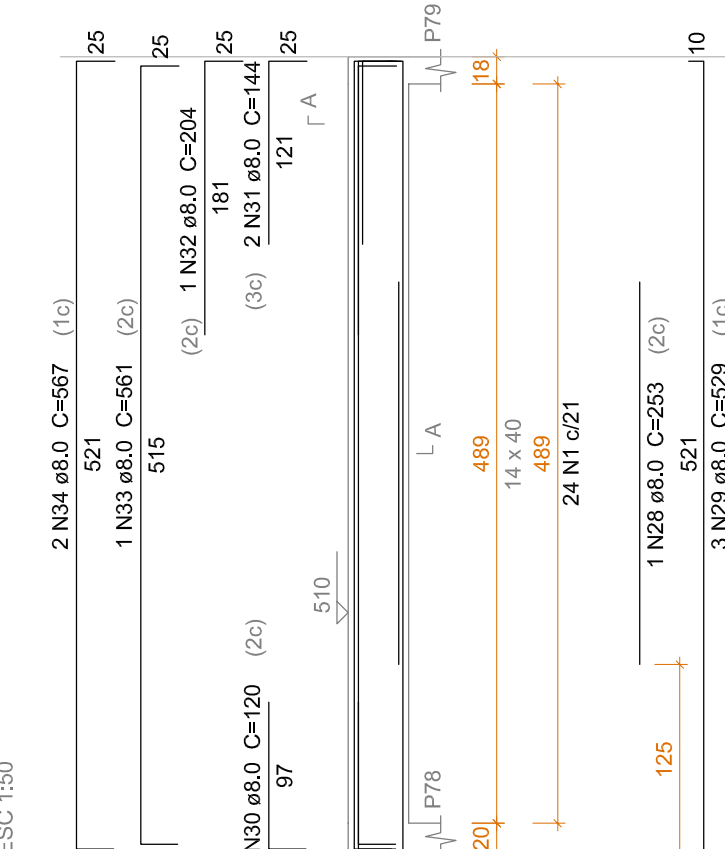
VC5 6



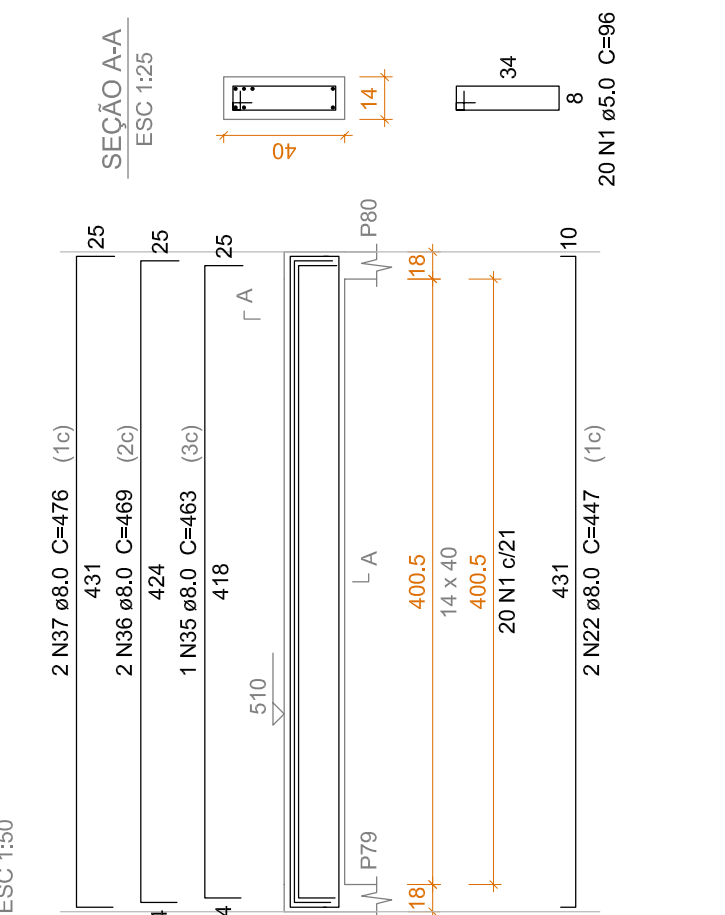
VC5 7



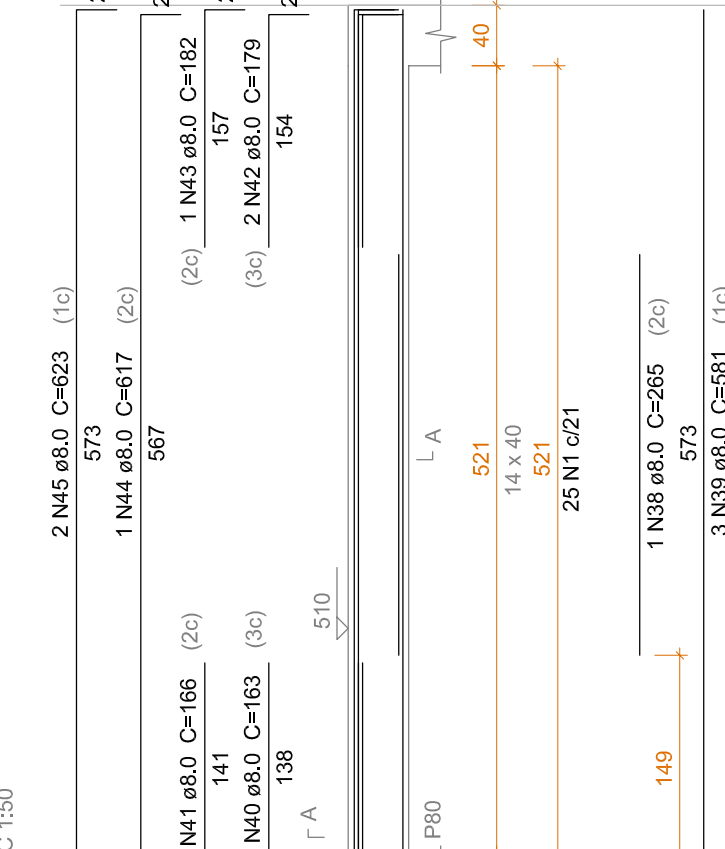
VC5 8



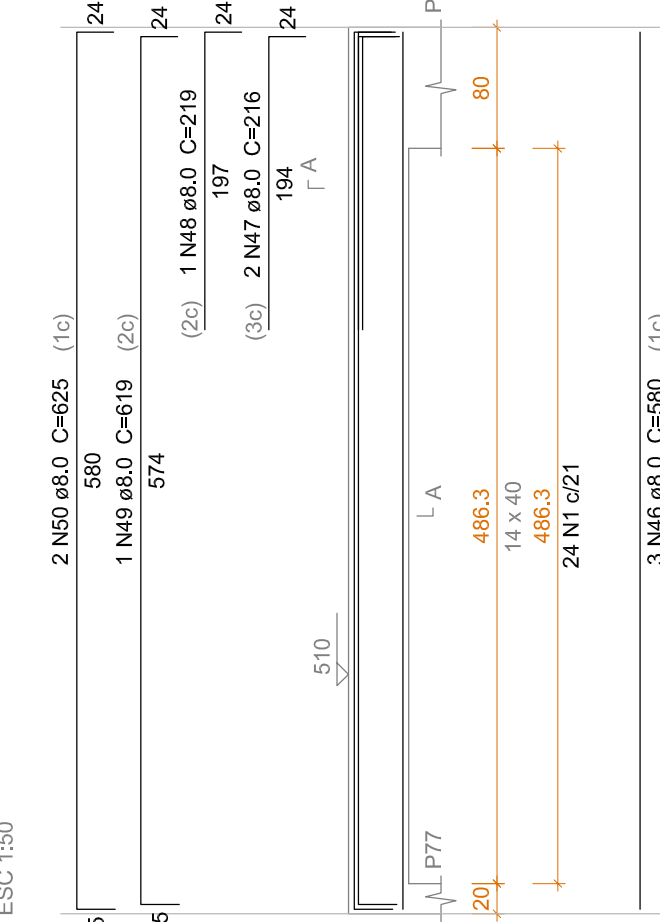
VC5 9



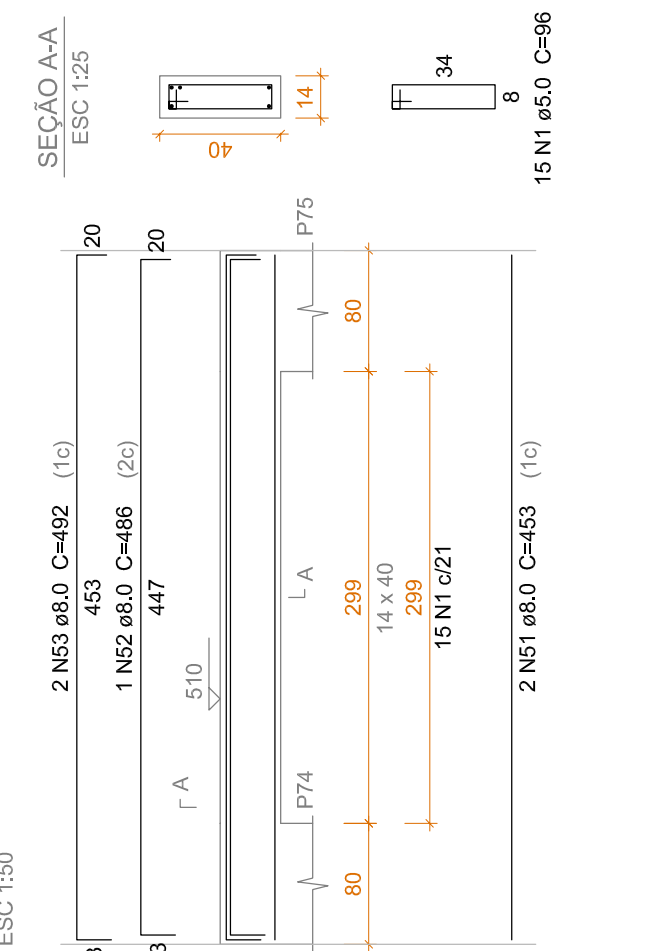
VC5 10



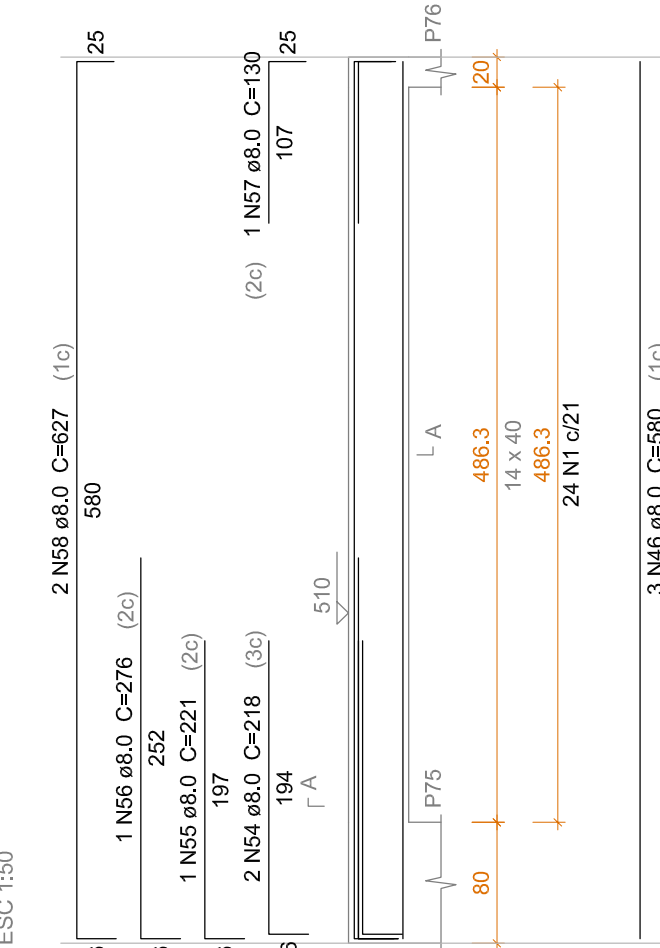
VC5 11



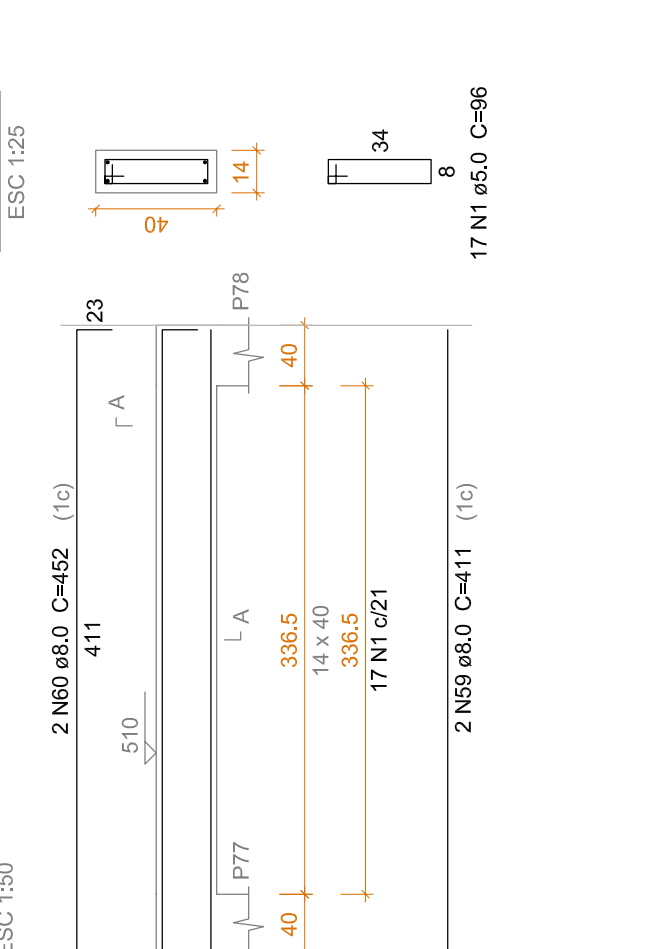
VC5 12



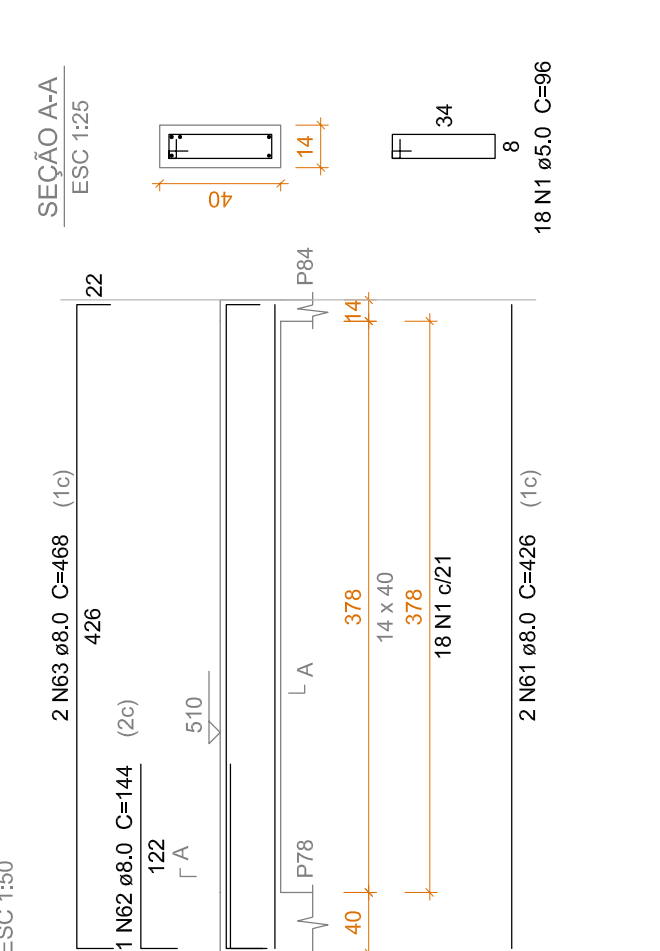
VC5 13



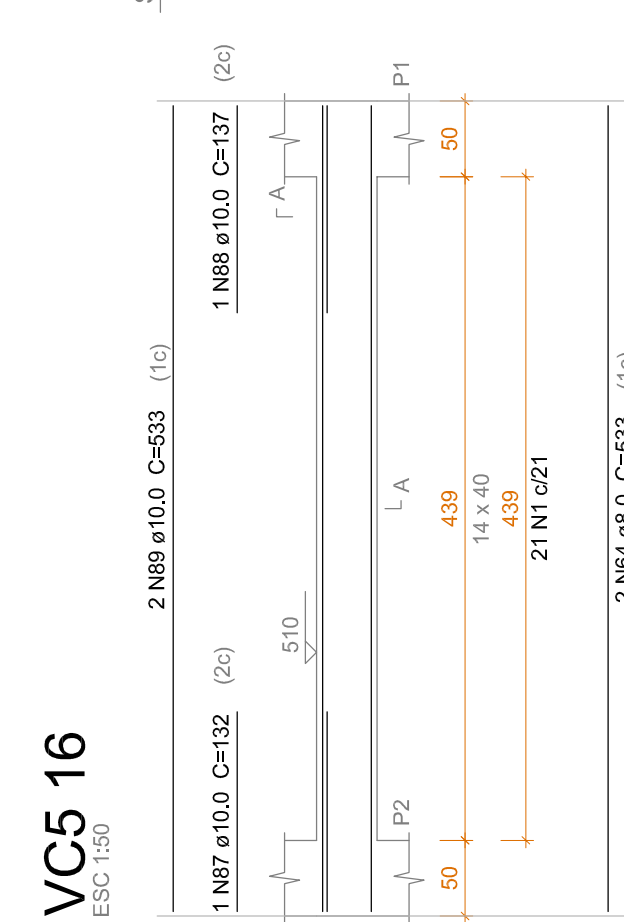
VC5 14



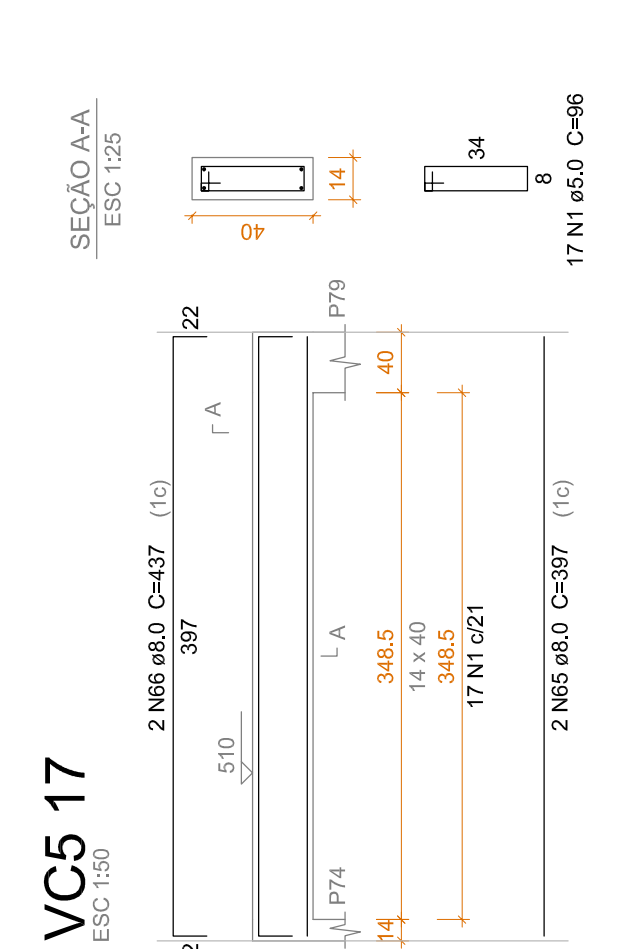
VC5 15



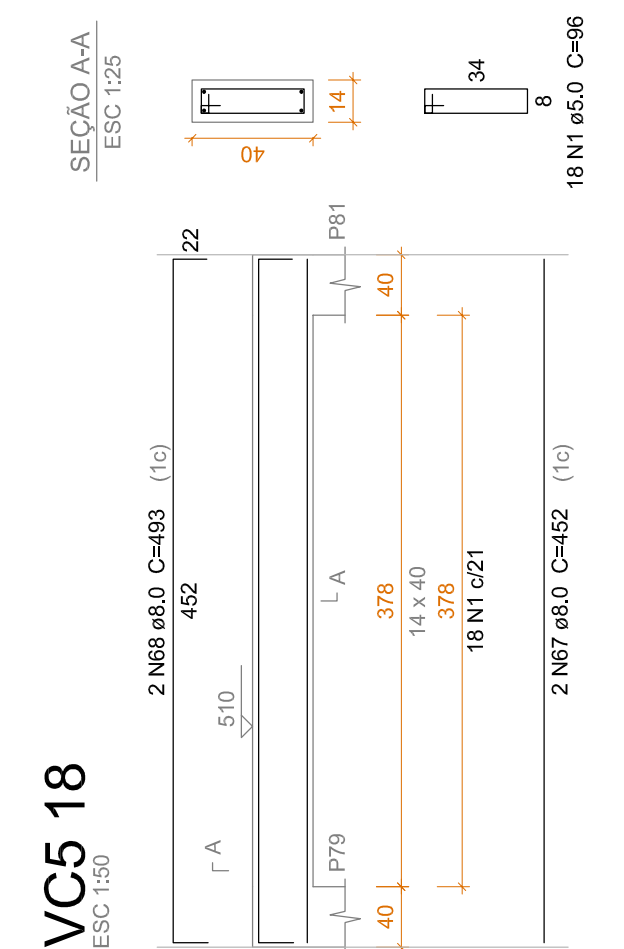
VC5 16



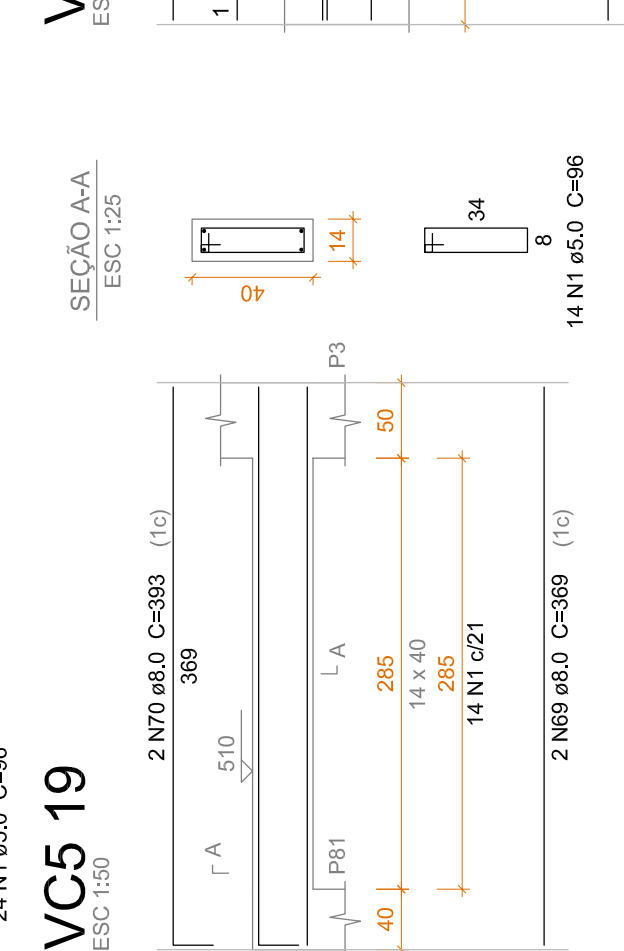
VC5 17



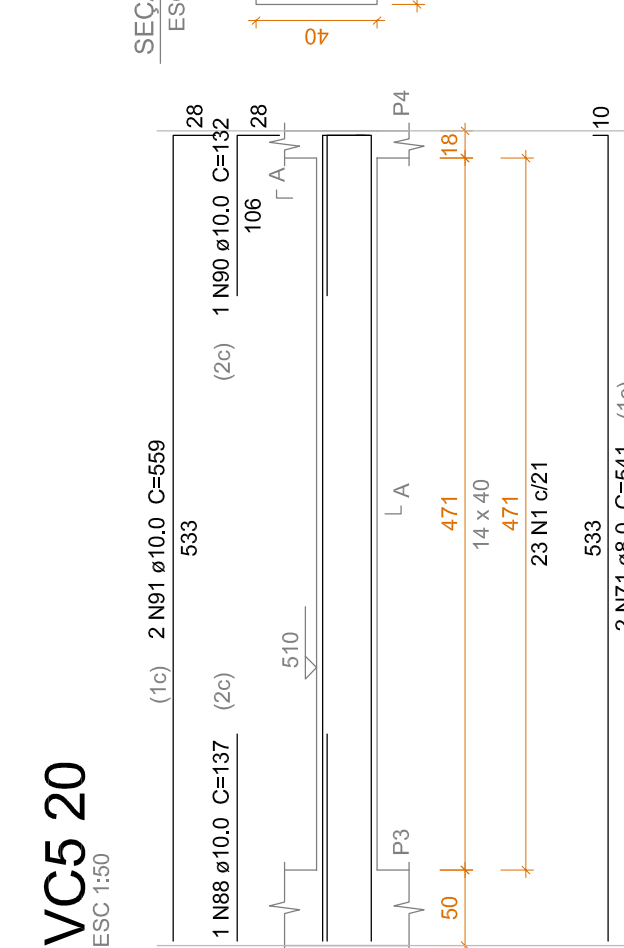
VC5 18



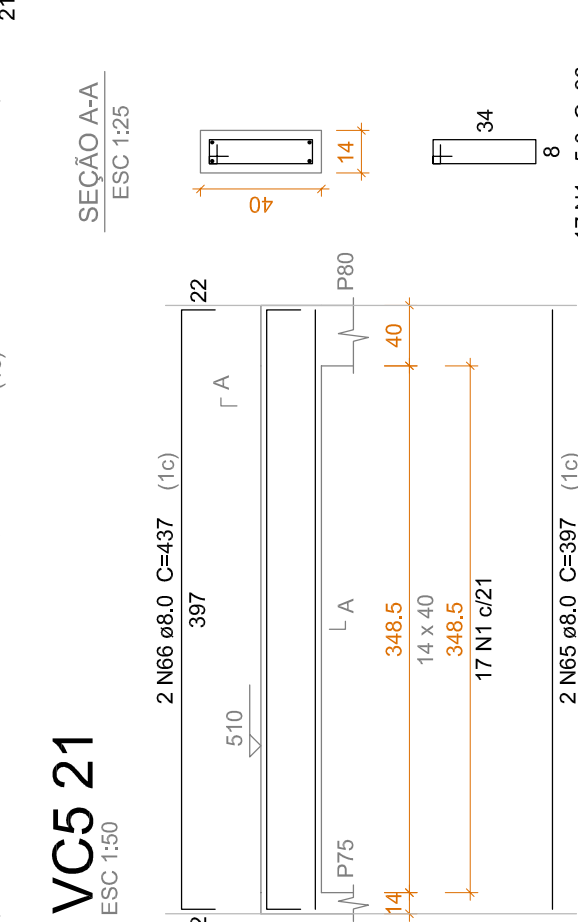
VC5 19



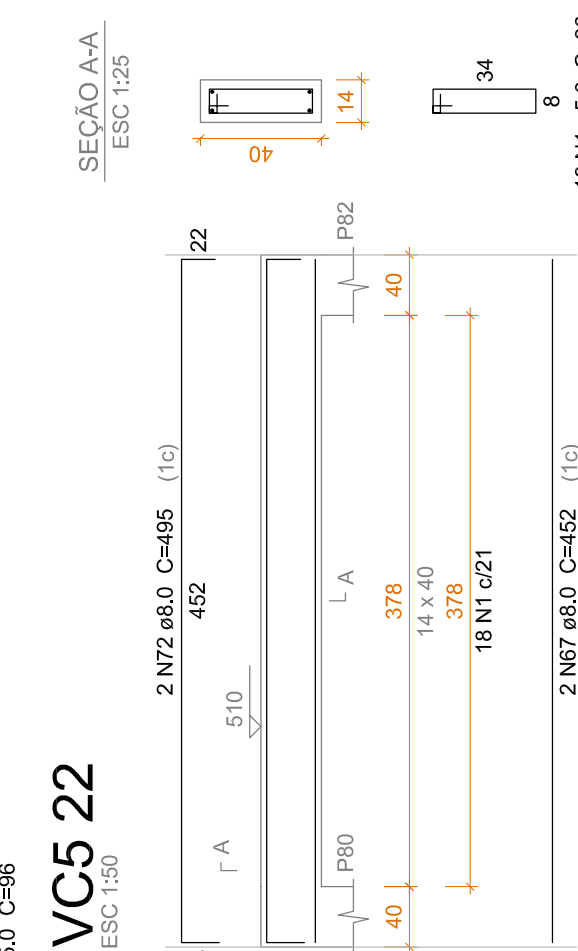
VC5 20



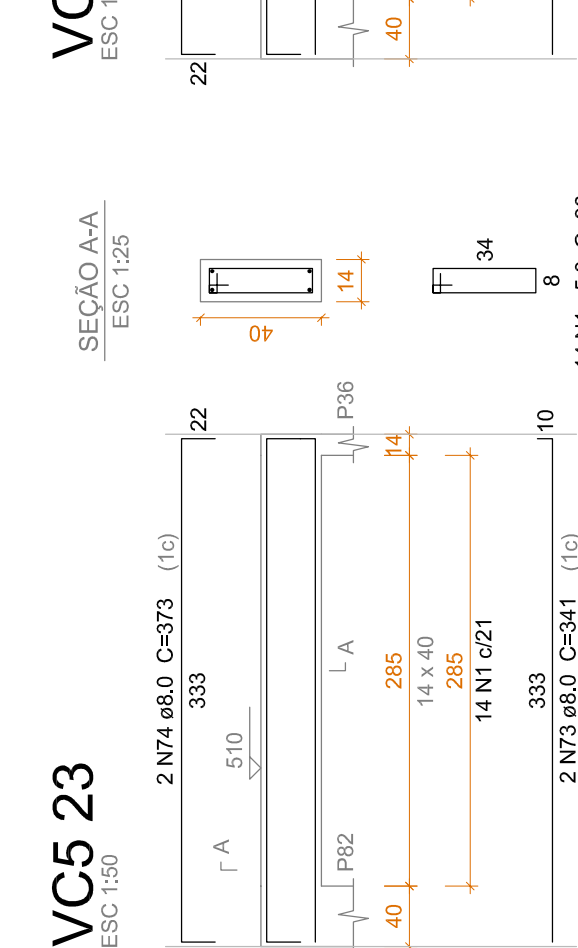
VC5 21



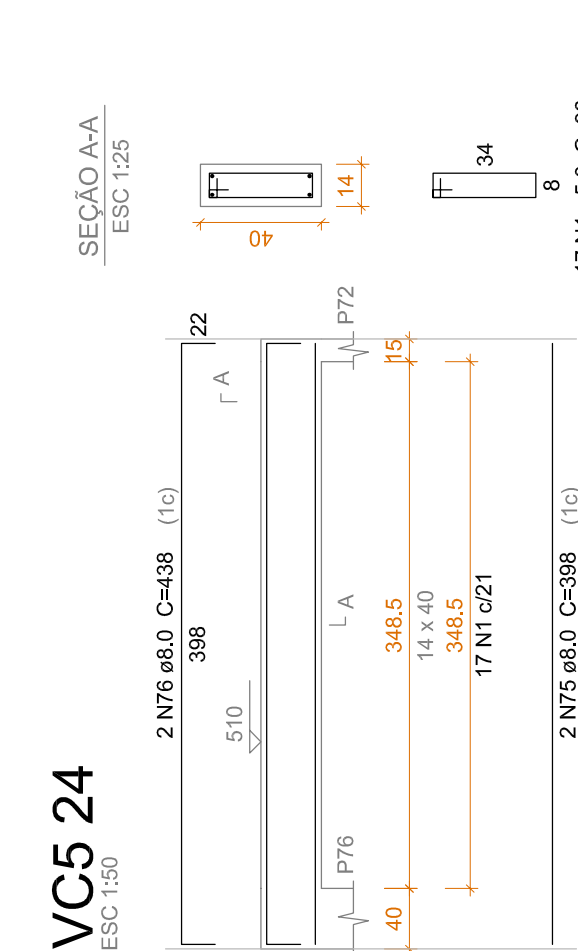
VC5 22



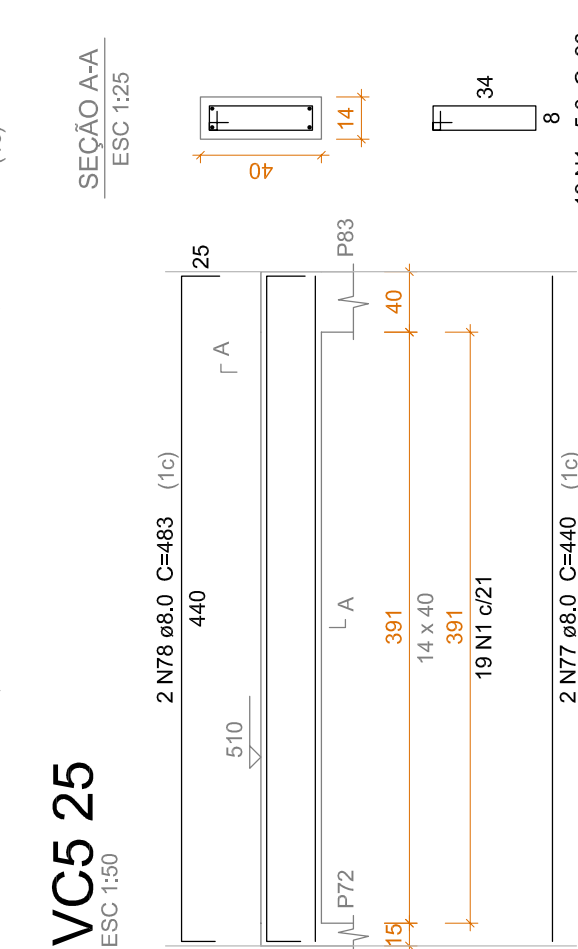
VC5 23



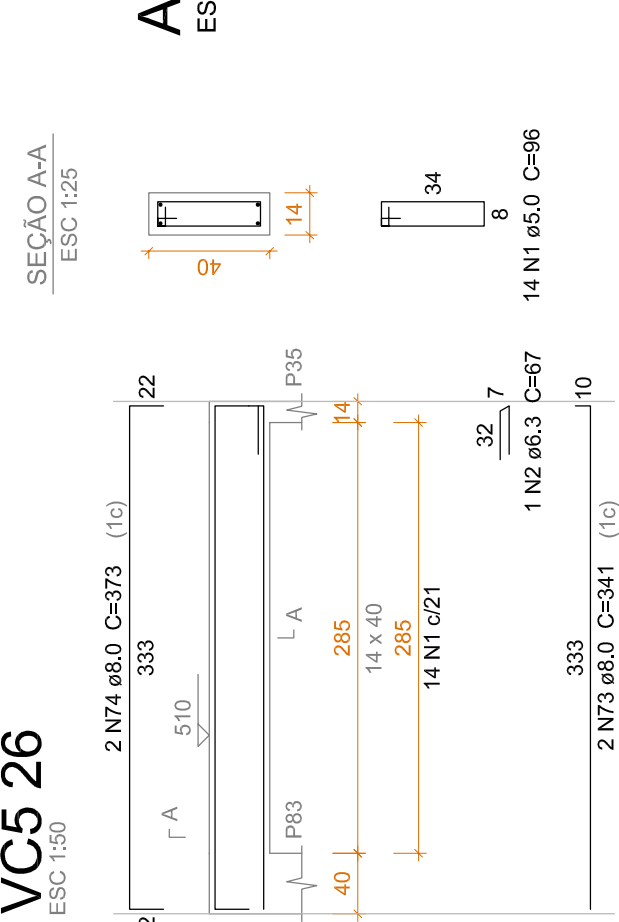
VC5 24



VC5 25



VC5 26



ARMAÇÃO VIGAS - COBERTURA NIVEL 510

ESCALA 1:50

Relação do aço

VC5 1	VC5 2	VC5 3
VC5 4	VC5 5	VC5 6
VC5 7	VC5 8	VC5 9
VC5 10	VC5 11	VC5 12
VC5 13	VC5 14	VC5 15
VC5 16	VC5 17	VC5 18
VC5 19	VC5 20	VC5 21
VC5 22	VC5 23	VC5 24
VC5 25	VC5 26	

ACO	N	DIAM (mm)	QUANT	CUMUL (mm)	C.TOTAL (mm)
CA60	1	6,0	501	96	4896
CA50	2	6,3	1	67	1096
	3	8,0	3	366	
	4	8,0	2	748	
	5	8,0	1	123	
	6	8,0	1	123	
	7	8,0	2	159	
	8	8,0	2	483	
	9	8,0	1	267	
	10	8,0	2	561	
	11	8,0	1	1122	
	12	8,0	1	139	
	13	8,0	1	214	
	14	8,0	2	606	
	15	8,0	2	1212	
	16	8,0	1	144	
	17	8,0	1	143	
	18	8,0	1	149	
	19	8,0	1	153	
	20	8,0	1	557	
	21	8,0	1	557	
	22	8,0	5	447	
	23	8,0	2	171	
	24	8,0	2	475	
	25	8,0	2	481	
	26	8,0	1	560	
	27	8,0	3	1680	
	28	8,0	1	253	
	29	8,0	3	529	
	30	8,0	1	144	
	31	8,0	2	288	
	32	8,0	1	561	
	33	8,0	1	561	
	34	8,0	2	567	
	35	8,0	1	463	
	36	8,0	2	469	
	37	8,0	2	469	
	38	8,0	1	265	
	39	8,0	3	591	
	40	8,0	2	163	
	41	8,0	1	166	
	42	8,0	1	350	
	43	8,0	1	179	
	44	8,0	1	617	
	45	8,0	2	623	
	46	8,0	6	580	
	47	8,0	2	216	
	48	8,0	2	432	
	49	8,0	1	619	
	50	8,0	2	625	
	51	8,0	2	453	
	52	8,0	1	486	
	53	8,0	1	486	
	54	8,0	2	486	
	55	8,0	1	218	
	56	8,0	1	221	
	57	8,0	1	276	
	58	8,0	1	130	
	59	8,0	2	927	
	60	8,0	2	1254	
	61	8,0	2	904	
	62	8,0	2	852	
	63	8,0	2	468	
	64	8,0	2	936	
	65	8,0	4	397	
	66	8,0	4	437	
	67	8,0	4	452	
	68	8,0	2	493	
	69	8,0	2	493	
	70	8,0	2	393	
	71	8,0	2	541	
	72	8,0	2	465	
	73	8,0	4	341	
	74	8,0	4	373	
	75	8,0	2	1762	
	76	8,0	2	438	
	77	8,0	2	440	
	78	8,0	2	483	
	79	10,0	1	380	
	80	10,0	1	380	
	81	10,0	1	386	
	82	10,0	2	405	
	83	10,0	1	151	
	84	10,0	1	154	
	85	10,0	1	154	
	86	10,0	1	566	
	87	10,0	1	132	
	88	10,0	2	274	
	89	10,0	2	533	
	90	10,0	2	132	
	91	10,0	2	559	

Resumo do aço

ACO	DIAM (mm)	C.TOTAL (mm)	PESO (kg)
CA60	6,0	96	0,7
	6,3	600,6	237,1
	8,0	71,8	44,2
CA60	5,0	481	74,1
PESO TOTAL (kg)			336,1
Volume de concreto (C=30) = 6,71 m³			
Área de forma = 112,61 m²			
CA50	281,4		
CA60	74,1		

REVISÃO	DESCRIÇÃO	DATA	RESPONSÁVEL
1	Emissão Inicial	11/2018	ES

<p>ASSOCIAÇÃO DOS MUNICÍPIOS DA REGIÃO DA FOZ DO RIO ITAJAI</p> <p>Rua Valério Antônio, 1335 - Bairro Santa Rosa - Foz de Itajaí - SC - 88309-442 - Fone: (51) 3333-3368 - E-mail: amfri@amfri.org.br</p>	<p>Prefeitura Municipal de Itajaí</p> <p>Estado de Santa Catarina</p>
---	---

<p>Projeto</p> <p>PROJETO ESTRUTURAL</p>	<p>Coordenador de Folia</p> <p>Vigias Coberturas Nível 510</p> <p>Prancha de Vigas 01/01</p>
--	--

<p>Data</p> <p>11/2018</p>	<p>Indicada</p>
----------------------------	-----------------

<p>Projeto</p> <p>UNIDADE BÁSICA DE SAÚDE RIO BONITO</p> <p>Rua Aq. Nilson Edson dos Santos - São Vicente</p>	<p>Responsável Técnico</p> <p>Raif Nordt</p> <p>Engenheiro CIVIL - CREA/SC - 018759-9</p>
---	---

<p>Desenho</p> <p>Enio Sampaio</p>	<p>Prefeitura Municipal</p> <p>Emerson Roberto Duarte</p> <p>Secretário Municipal de Saúde</p>
------------------------------------	--

<p>11/2018</p>	<p>17/20</p>
----------------	--------------